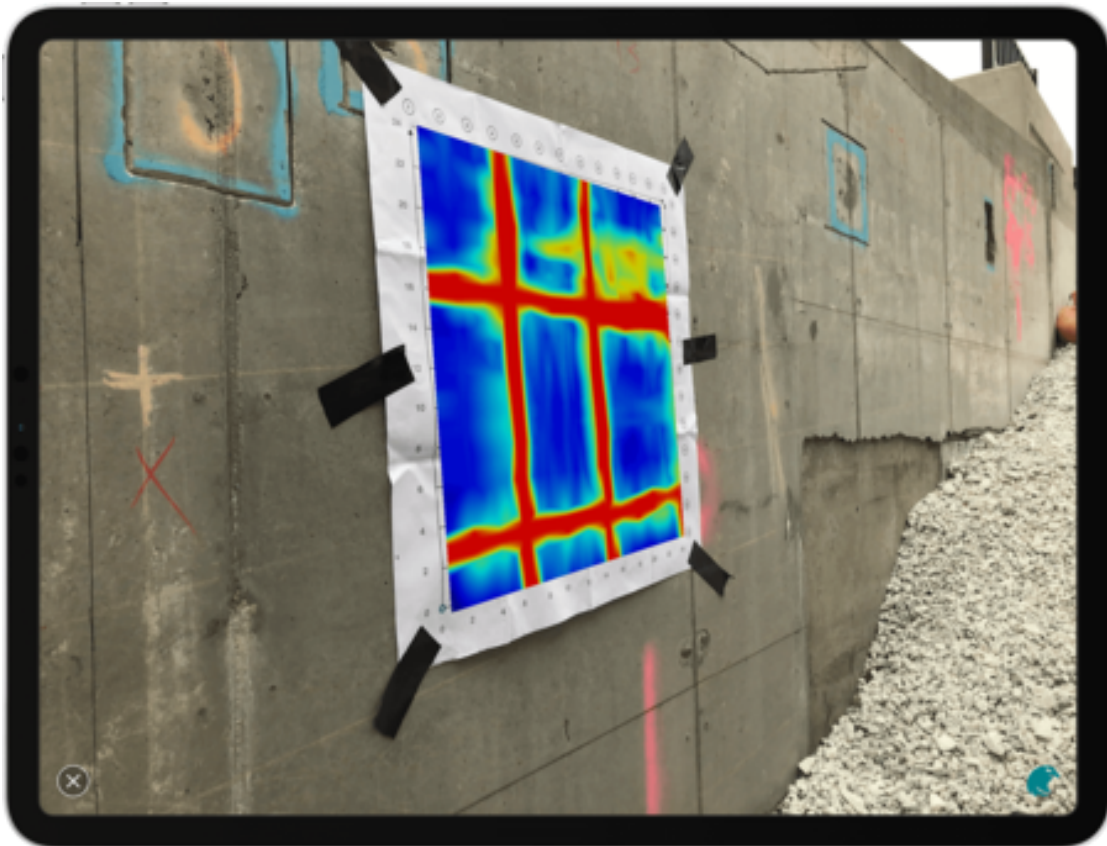




混凝土成像：多技术方法如何促进世界一流的检测



Proceq GP8000 results showing rebar and a large void (top right). The concrete was cored and the void was confirmed. It is an example of a consolidation void.



SCREENING
EAGLE



[Terms Of Use](#)
[Website Data Privacy Policy](#)

Copyright © 2024 Screening Eagle Technologies. All rights reserved. The trademarks and logos displayed herein are registered and unregistered trademarks of Screening Eagle Technologies S.A. and/or its affiliates, in Switzerland and certain other countries.